



# THE ROADS AND TRANSPORT **ALLIANCE**

Progress Report  
**2014-15**



# THE ROADS AND TRANSPORT ALLIANCE

The Alliance acknowledges the assistance provided by the Queensland Department of Transport and Main Roads and Regional Roads and Transport Groups in compiling this report.

17

Regional Roads and Transport Groups across Queensland representing

65

local councils.

194

Number of projects supported this year through Roads and Transport Alliance Transport Infrastructure Development Scheme funding.

85

Number of Regional Roads and Transport Group meetings attended by Roads and Transport Alliance representatives.

22

Number of capability initiatives funded through the State-wide Capability Development Fund.

# 35,337kms

Length of Local Roads of Regional Significance in Queensland.

# 3

years of 100% Roads and Transport Alliance Transport Infrastructure Development Scheme expenditure.

# 110

Number of media mentions of Roads and Transport Alliance and/or Transport Infrastructure Development Scheme.

## Contents

Foreword	4
1. Message from the Chair	5
2. Who we are and what we do	6
3 Delivering in the community, Transport Infrastructure Development Scheme projects	9
4 Supporting state-wide capability improvements	18
5 State-wide financial reports	24
6 Regional Roads and Transport Group profiles	28
Far North Queensland RRTG	30
North Queensland RRTG	31
North West Queensland RRTG	32
Whitsunday RRTG	33
Rockhampton RRTG	34
Bowen Basin RRTG	35
Outback RRTG	36
Wide Bay Burnett RRTG	38
Gladstone RRTG	40
Brisbane Metro Alliance RRTG	41
Northern SEQ RRTG	42
Eastern Downs RRTG	43
Western Downs RRTG	44
Southern RRTG	45
Scenic Valleys RRTG	46
Southern Border RRTG	47
South West RRTG	48
7 Glossary	49

# Foreword

**We are proud to present the 2014-15 Annual Progress Report of the Roads and Transport Alliance. The Alliance is the primary mechanism for the State and local governments to collaborate in managing Queensland's vast network of Local Roads of Regional Significance.**

As the State continues to grow, industry and the community expect higher standards of safety, reliability, and efficiency from our roads and transport networks. Recognising this, and acknowledging direct requests from the Local Government Association of Queensland, the State Government has demonstrated its strong support for the Alliance by delivering on a major election promise to increase Transport Infrastructure Development Scheme (TIDS) funding by \$60 million a year over two years.

The State Government exceeded this commitment, bringing funding forward to 2015-2016 to provide support for local infrastructure and jobs, at a time when jobs and job security are more important than ever.

That means a total of \$70 million in state funding available through the program, in both 2015-2016 and 2016-2017, with the component provided to Regional Roads and Transport Groups (RRTGs) increased to \$61.2 million.

Importantly, the State Government has also maintained the reliability of TIDS funding by continuing the

allocative distribution to RRTGs to support effective forward planning, a key tenet of the Alliance model.

Councils have also demonstrated their commitment by matching the funding allocations 'dollar for dollar' while continuing to deliver a broad range of other infrastructure and services to their communities - often during periods of natural disaster reconstruction. Despite the difficult circumstances and major constraints placed on councils during recent times, RRTGs have continued to deliver in the spirit of the Alliance.

Whilst our roads serve to connect communities and transport people, goods and services, the construction and maintenance of our road network is also an important source of local employment in many rural communities. This is why the State Government has committed to a \$40 million Western Roads Upgrade Program as part of its 2015 State Budget initiatives.

The past year has seen a number of Indigenous Councils participating more actively in the Alliance and we encourage the closer working arrangements between Indigenous Councils and RRTGs that have developed. For its part, the State Government has confirmed its continuing support for Indigenous Councils with funding of \$8.2 million per year through Aboriginal and Torres Strait Island (ATSI) TIDS.

The ongoing efforts of RRTGs to build capability and capacity are also to be commended. Many groups continue to demonstrate that collaboration and resource-sharing bring

efficiencies and can deliver best-value outcomes. Support for RRTGs seeking to build their capability is continued through the allocation of \$600,000 per year to the State-wide Capability Development Fund.

The Roads and Transport Alliance depends on the continuing efforts of councils and the Department across all regions. Your active participation in the Alliance through RRTGs is vital to delivering a safer and more efficient transport network for communities across Queensland now and into the future.

We sincerely thank everybody who has participated in, or contributed to the Alliance over the last 12 months. We present this report to you in recognition of your efforts and ongoing commitment to the Alliance partnership.

**Councillor Margaret de Wit**  
*President, Local Government Association of Queensland*

**The Honourable Mark Bailey MP**  
*Minister for Main Roads, Road Safety and Ports and Minister for Energy and Water Supply*

October 2015.





# 1. Message from the Chair

The 2014-15 year is one of continued success for the Roads and Transport Alliance partnership. For the third year running, Regional Roads and Transport Groups (RRTGs) have responded to the call and fully expended their Transport Infrastructure Development Scheme (TIDS) funding allocations. On behalf of the Roads and Transport Alliance Board, I'd like to congratulate RRTGs on their collaborative and at times innovative, program management and delivery of projects.

Achieving full expenditure for the third year running played a significant role in the Palaszczuk Government confirming its election commitment to increase TIDS funding to RRTGs by \$30 million a year for the next two financial years. This not only demonstrates a commitment to the Alliance, but also recognises the vital role TIDS plays in assisting RRTGs to deliver improved transport infrastructure for their communities.

We all know the regard for which the Roads and Transport Alliance is held as a best practice cooperative governance model. We've long been envied from afar, however as the equivalent of our RRTGs or other regional roads and transport planning forums are developing in southern states, we can't afford to sit back and take the view that the hard work has been done.

In last year's Message from the Chair, my colleague and fellow Board member, Mr Neil Scales, Director-General, Department of Transport and Main Roads, urged us to take the model to the next level – beyond funding and delivery – to incorporate transport and regional planning and economic development activities. This has largely set the agenda for the Board over the last year as we continue the task of reviewing the Alliance's Operational Framework. While we have been at the forefront for more than a decade, we must continue to evolve the Roads and Transport Alliance model and strive to remain out in front for the next decade and beyond. As the Chair of the Board, I look forward to seeing this important work come to fruition during the 2015-16 year.

During the year we've also seen an increase in the number of councils participating in the Roads and Transport Alliance.



Following the previously commissioned review into Indigenous council participation in the Roads and Transport Alliance, the Board was very pleased to welcome the participation of five Indigenous councils in the Roads and Transport Alliance as full members of their respective RRTGs as follows:

- Doomadgee and Kowanyama Aboriginal Shire Councils – North West Qld RRTG.
- Woorabinda Aboriginal Shire Council – Bowen Basin RRTG.
- Wujal Wujal and Yarrabah Aboriginal Shire Councils – Far North Qld RRTG.

Looking back over the year a number of collaborative projects (some of which are profiled in this Progress Report) have been delivered by RRTGs. Notable examples include the completion of a Regional Road Safety Strategy by the Wide Bay Burnett RRTG, the First and Last Mile Pilot Project by the Eastern Downs and Western Downs RRTGs, a Freight Strategy by the Outback RRTG, a Joint Bitumen Reseal Project by the Bowen Basin RRTG, the Diploma of Local Government (Asset Management) course undertaken by the Far North Queensland RRTG and a number of training initiatives across the State, including joint training opportunities undertaken by three Central Queensland RRTGs. These projects highlight the benefits of what can be achieved through collaboration across a number of state and local government stakeholders.

I would like to take this opportunity to thank all Roads and Transport Alliance Board members for their contributions throughout the year and in particular acknowledge the leadership of Mr Scales as Chair of the Board from February 2014 to May 2015.

On behalf of my fellow Roads and Transport Alliance Board members, it is my pleasure to present this 2014–15 Progress Report.

A handwritten signature in black ink, appearing to be 'G. Hallam', written over a light blue circular stamp.

**Greg Hallam**  
*Chair, Roads and Transport Alliance Board*

October 2015.

## 2. Who we are and what we do

### 2.1 The Roads and Transport Alliance

The Roads and Transport Alliance is a cooperative governance arrangement between the Department of Transport and Main Roads (TMR), the Local Government Association of Queensland (LGAQ) and Queensland councils.

Formed in 2002, the Alliance was initiated to address shared road and transport challenges across Queensland to:

- maximise the economic, social and environmental benefits of our joint investments in the State's transport network
- achieve maximum efficiencies through joint and innovative approaches to road stewardship, network planning, program development, purchasing and resource sharing
- improve road management and delivery capability through increased training, advanced technology and knowledge transfer
- optimise safety for all road users
- maximise the investment by all parties on the Queensland transport network.



Members of the Roads and Transport Alliance at the 2014 LGAQ annual conference.

The Roads and Transport Alliance operates under a Memorandum of Agreement between TMR and the LGAQ, cementing their commitment to shared road and transport interests. The Alliance relationship is a long-standing one with this arrangement now onto its third agreement, covering the 2013-2018 period.

6

### 2.2 The Roads and Transport Alliance Model

<p><b>Roads and Transport Alliance Board</b></p> <p>The Board includes senior executives from TMR and LGAQ who set the strategic direction of the Alliance.</p>	
<p><b>Roads and Transport Alliance Project Team (RTAPT)</b></p> <p>The team is formed by TMR and LGAQ officers who implement Alliance strategies and initiatives and provide support to RRTGs and the Board.</p>	<p><b>Regional Roads and Transport Groups (RRTGs)</b></p> <p>Group members include local government elected representatives and TMR district directors. RRTGs are the primary decision making bodies of the Alliance who determine regionally prioritised improvements to their communities' transport infrastructure.</p>
	<p><b>Technical Committees (TCs)</b></p> <p>These committees are comprised of local government and TMR senior engineers and other relevant technical staff. TCs provide technical advice and recommendations to the RRTGs.</p>



*LGAQ Board members, Greg Hoffman PSM and Simone Talbot, and Peter Ball, Partner, and Annabelle Goldsworthy, Consultant, KPMG visit Burketown to discuss the Workforce Sustainability Project.*



*Far North Queensland Technical Committee members at Yarrabah*

## 2.3 Roads and Transport Alliance Board

The role of Chair rotates annually between the TMR and LGAQ board members. For the period July 2014 to June 2015 the board members were:

LGAQ	TMR
Mr Greg Hallam PSM CEO	Mr Neil Scales Director-General
Chair, May 2015 – Current	(Chair, February 2014 – May 2015)
Mr Greg Hoffman PSM General Manager - Advocacy	Mr Miles Vass General Manager - Program Delivery & Operations
Ms Simone Talbot Manager – Advocacy (Infrastructure, Economics and Regional Development)	Mr Joshua Hannan General Manager - Transport Strategy & Planning

### Regional Roads and Transport Groups

There are 17 Regional Roads and Transport Groups across the State, with each group consisting of neighbouring local governments (or a single council) and a TMR district office.

### Involvement of Indigenous councils in the Roads and Transport Alliance

During the year, the Roads and Transport Alliance continued working with non-Cape York Indigenous councils who accepted an invitation to participate in the Roads and Transport Alliance - a key recommendation of the previously commissioned review into Indigenous council participation in the Roads and Transport Alliance.

As at 30 June 2015, the following Indigenous councils are participating in the Roads and Transport Alliance:

- Doomadgee and Kowanyama Aboriginal Shire Council's – North West Qld RRTG.
- Woorabinda Aboriginal Shire Council – Bowen Basin RRTG.
- Wujal Wujal and Yarrabah Aboriginal Shire Council's – Far North Qld RRTG.



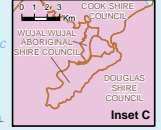
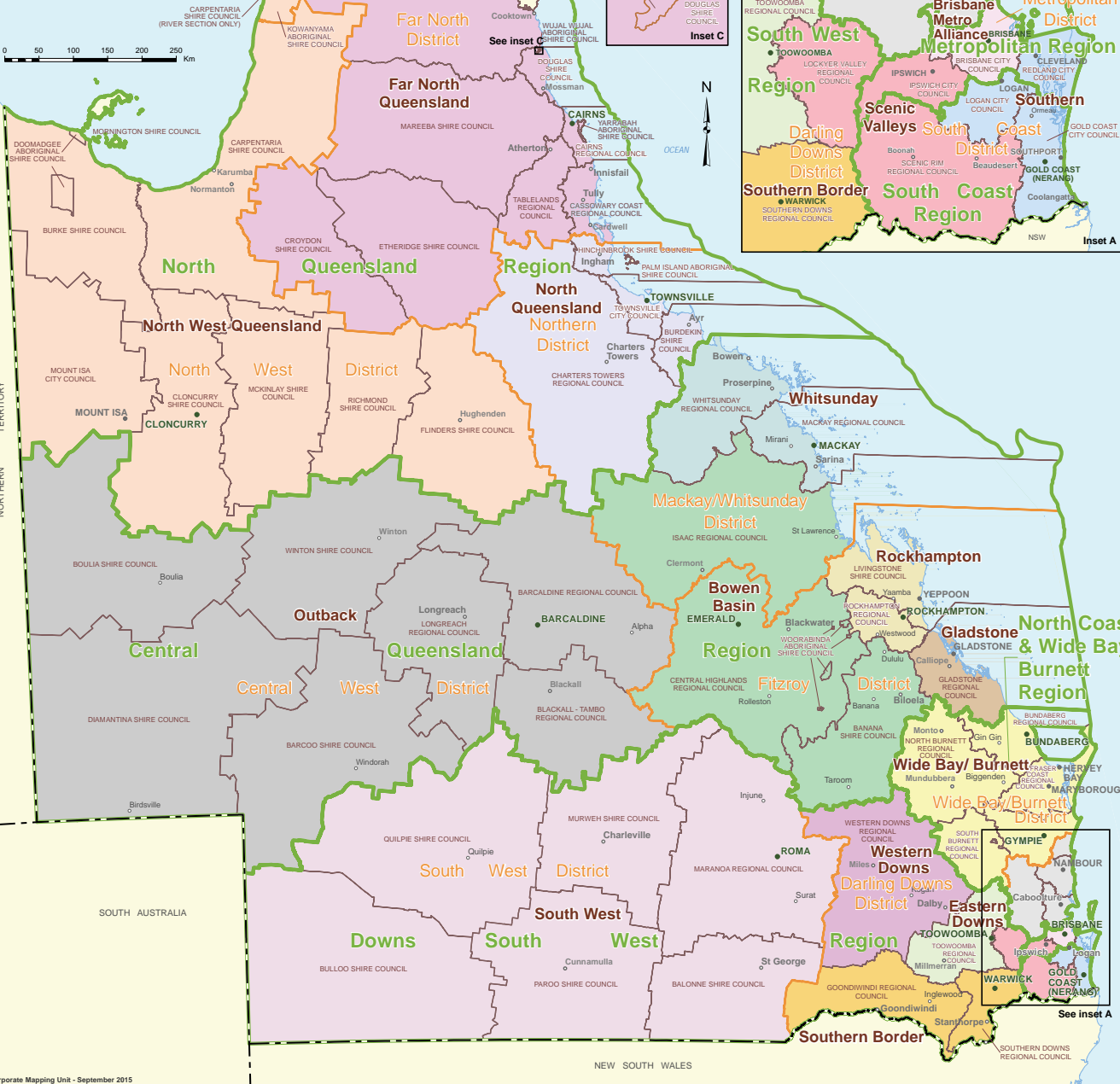
**Legend**

- Region Boundary
- District Boundary
- LG Boundary
- Outback RRTG Name
- Metropolitan PDO Region Name
- BUNDEBERG PDO Office
- YEPPON Towns

Region / District	Office
CENTRAL QUEENSLAND	Rockhampton
CENTRAL WEST	Barcaldine
FITZROY	Rockhampton
MACKAY/WHITSUNDAY	Mackay
DOWN SOUTH WEST	Toowoomba
SOUTH WEST	Roma
DARLING DOWNS	Toowoomba
METROPOLITAN	Brisbane
METROPOLITAN	Brisbane
NORTH COAST AND WIDE BAY/BURNETT	Maroochydore
NORTH COAST	Maroochydore
WIDE BAY/BURNETT	Bundaberg
NORTH QUEENSLAND	Townsville
FAR NORTH	Cairns
NORTHERN	Townsville
NORTH WEST	Cloncurry
SOUTH COAST	Nerang
SOUTH COAST	Nerang

**Transport and Main Roads/LGAQ Regional Roads and Transport Groups (RRTGs)**

- Brisbane Metro Alliance
- Bowen Basin
- Eastern Downs
- Far North Queensland
- Gladstone
- Northern SEQ
- North Queensland
- North West Queensland
- Outback
- Rockhampton
- Scenic Valleys
- Southern Border
- Southern
- South West
- Western Downs
- Whitsunday
- Wide Bay/Burnett







# 3 Delivering in the community, Transport Infrastructure Development Scheme projects



## 3 Delivering in the community, Transport Infrastructure Development Scheme projects

The Roads and Transport Alliance directly benefits communities across Queensland. This is most apparent through Transport Infrastructure Development Scheme (TIDS) projects developed and delivered by Regional Roads and Transport Groups (RRTGs). TIDS addresses regionally prioritised transport needs across the system for all users.

In 2014-15, 194 projects were administered through the TIDS program with funding responsibilities shared amongst state and local government agencies. This section showcases a small sample of the projects undertaken and the various benefits achieved.

### 3.1 Outback RRTG, Donohue Highway, Boulia Shire

The Donohue Highway connects Queensland to the Northern Territory in the Boulia Shire. It is an important interstate route between Western Australia and Queensland via the Northern Territory, called the "Outback Way". This road supports interstate tourism, gas and mineral exploration, cattle transport, access to remote and indigenous communities and supports agricultural businesses in both Queensland and the Northern Territory. Around 54 vehicles travel per day down this route, 13 per cent of which are heavy vehicles.

Gravel roads when subjected to high levels of traffic during dry conditions (as has occurred over recent years) deteriorate very quickly. The safety issues on this road are typically severe bulldust holes, corrugations, very loose gravel surface, severe dust and visibility issues for oncoming traffic, damage to vehicles from loose stones, vibration and general road impact. When the road deteriorates it is not possible to maintain high speeds. This reduces transport efficiency and increases freight costs and also damage to general freight and stock. The damage to freight and stock then further reduces the profitability of the associated businesses that use this link.

Over 10 days, approximately 6km of road was resheeted, requiring about 7200m<sup>3</sup> or about 13,000 ton of gravel. The new gravel surface provides a safer road environment for all road transport users.

The TIDS funding contribution was \$150,000, with the total value of works \$300,000.

*Submitted by Stuart Bourne, Member, Technical Committee, Outback RRTG*

Donohue highway before



Donohue highway during resheeting



Donohue highway after resheeting



### 3.2 Wide Bay Burnett RRTG, Gears Bridge (Cedar Pocket Road), Gympie

Gympie Regional Council is responsible for almost 100 timber bridges all of which require regular inspections and high levels of maintenance expenditure. Council has an ongoing timber bridge replacement program in which TIDS funding plays a vital role.

Cedar Pocket Road is classified as an arterial road in council's network. It is located a short distance east of Gympie and services a large area of rich agricultural land, the Seqwater-operated Cedar Pocket Dam, Gympie East State School and a large number of rural residential properties.

Gears Bridge is located mid-way along Cedar Pocket Road, crossing Deep Creek just below the spillway of the dam. Prior to replacement, it was a single lane, two span timber bridge controlled by a give way sign. Reduced load and speed limits were in place, severely restricting movements by milk tankers, timber and cattle trucks and other heavy vehicles. The alternative route for heavy vehicles included unsealed and low standard sealed roads and added approximately 15 minutes to a round trip. The narrow width of the old bridge, plus the detouring of heavy vehicles via other roads, were raising safety concerns for road users.

A number of options were considered for the replacement project including a standard deck unit bridge and a range of conventional and unconventional bridge and culvert options. The adopted design includes:

- 3 cell x 2700mm x 2700mm box culverts
- cast in situ spanning slabs
- 8.0m wide trafficable width
- wire rope crash barriers.

Located below the spillway of the Cedar Pocket Dam (which can be seen in the background of the photographs), particular considerations for the designers were over-turning and scour protection during periods when the dam is over-flowing. As a result, tie-down micro-piles were installed under the base slab and the project includes extensive scour protection and soil stabilisation.

The project cost a total of \$580,000, which included a \$210,000 contribution from TIDS. It has provided a safe, robust, low maintenance and long lasting structure.

*Submitted by Lawry O'Brien, General Manager Design Services, Gympie Regional Council and member of the Wide Bay Burnett RRTG*

Gears Bridge before



Gears Bridge (Cedar Pocket Road) before the project



Gears Bridge after the project





### 3.3 Southern RRTG, Helensvale Road Upgrade, Gold Coast

This project was commissioned to remedy a number of problems, including widening of the existing road to cater for all road user types and increasing pedestrian and traffic volumes in the area, improvements to the active travel network and general road safety improvements. Works included provision of new and improved pedestrian facilities, particularly for students accessing Helensvale High School, road widening and upgrade for all transport users, and construction of missing active travel infrastructure to provide improved network continuity.

The project included:

- Widening works for 1 km from Warrego Way to Monterey Keys Drive.
- Provision of a new separated shared path for cyclists and pedestrians between Warrego Way and Monterey Keys Drive.
- Improved on road cycle lanes from Warrego Way to Monterey Keys Drive.
- Widening existing bike lane pinch points which improved on and off road cycle facilities and provided consistent lane widths and cycle ramps at the roundabouts for transitions from and onto the shared pathway.
- Provision of additional protection for cyclists at the roundabout, including installation of additional splitter islands.
- Extra crossing points for people with disabilities, pedestrian refuges and on-off ramps.
- Infill of the roundabout centre island to remove vertical drop and associated guard rail.
- Construction of an additional 80m of footpath infrastructure adjacent to Helensvale Road beside the Helensvale School.

The total project cost was \$3.33 million. TIDS contributed \$372,000 towards the project and City of Gold Coast contributed \$2.96 million.

*Submitted by Peter Cramp, Coordinator Planning Transport Management, City of Gold Coast Council and member of the Southern RRTG.*

Helensvale Road before



Helensvale Road during the upgrade



Helensvale Road after the upgrade



### 3.4 Southern Border RRTG, Kildonan Road Widen and Seal Project, Goondiwindi

Kildonan Road is a 45 km Local Road of Regional Significance (LRRS) which services the Goondiwindi Regional Council area, generating a significant volume of heavy traffic as well as forming part of the Border Rivers Tourist Drive.

Kildonan Road offers a vital link to significant beef and cotton production areas in the south eastern region, including access to two cotton processing gins, a feedlot and a number of quarries.

Kildonan Road also caters to the increasing tourism traffic chasing the outback experience, providing motorists with a scenic route along the picturesque Macintyre River, with public access points to the water's edge.

The Kildonan Road Widen and Seal Project was jointly funded by Goondiwindi Regional Council and TIDS funding secured through the Southern Border RRTG. This critical upgrade was delivered over a four year period and has provided 17.9 km of 7 m width sealed road.

The basic scope of works for this project included:

- Procuring white rock gravel from a gravel pit 35 km from the works site
- Remove and salvage existing roadside furniture / signage
- Boxing out pavement shoulders to 200mm depth, leaving 3.5m trafficable surface at the centre line where existing pavement conditions allow
- Import, wet mix, lay and compact white rock base material to 200mm thickness, 9m pavement formation
- Primer seal pavement shoulders with 200mm overlap of existing seal
- Installation of required roadside furniture / signage
- Second coat seal to full 7m width on straights with 0.5m curve widening.

Additional funds secured in the 2015-16 TIDS funding allocation will enable the continuation of the widening works on Kildonan Road, with the next stage programmed to commence in April 2016. On completion of the project, it is estimated that the total cost will be \$2.2 million, of which \$1.1 million will be allocated from TIDS.

*Submitted by Kerry McKenzie, Executive Assistant to Director Engineering Services, Goondiwindi Regional Council and member of the Southern Border RRTG*

Kildonan Road before



Kildonan Road during the project



Kildonan Road after the project





### 3.5 Far North Queensland RRTG, Bridge Replacement – Lawyer and Vine Creeks, Atherton Tablelands

Tully Falls Road is a high priority Local Road of Regional Significance (LRRS) in Far North Queensland. This road is a critical link to Koombooloomba Dam and related hydro power station located south west of Ravenshoe on the Atherton Tablelands.

Tully Falls Road is also the only road servicing rural residential properties on the outskirts of Ravenshoe and carries high volumes of international and domestic tourists into the Koombooloomba National Park.

The Far North Queensland RRTG allocated \$885,000 TIDS funding towards replacement structures for bridges located at Lawyer and Vine Creeks, both important elements of the Tully Falls Road. The project was delivered over two financial years from 2013-2015 for a total project cost of \$1.77 million.

#### Lawyer Creek Bridge before



As the two bridges are located in close proximity to each other, the projects were staggered to mitigate the risk to road users of potential closures associated with high wet season rainfall. Each project involved the replacement of an aged single lane timber girder bridge with a modern, pre-stressed concrete girder structure and associated approach and guardrail works. Overall, the two projects were completed within time and budget constraints.

The upgrades have provided improved accessibility for all road users, in particular heavy vehicles accessing Koombooloomba Hydro, as well as improved road safety and a reduction in routine maintenance.

*Submitted by Ashley Greenwood, Manager Infrastructure Support Services, Infrastructure Services, Tablelands Regional Council and member of the Far North Queensland RRTG*

#### Lawyer Creek Bridge after the project



#### Lawyer Creek Bridge during the project



#### Vine Creek Bridge before



#### Vine Creek Bridge after the project





### 3.6 Gladstone RRTG, Mt Larcom Bracewell Road Upgrade, Mount Larcom

Through its planning processes, Gladstone Regional Council identified a section of the Mt Larcom Bracewell Road as requiring widening and pavement renewal. Situated to the west of the town of Mount Larcom between chainage 5.5 km and 7.5 km, increased traffic demands and maintenance costs meant that this section of road had effectively surpassed its design life and an upgrade was a priority.

The project was completed during the 2014-15 financial year with total funding of \$1.13 million. This included a TIDS allocation of \$198,058, funding of \$370,000 from the Federal Government's Roads to Recovery program, and a contribution from the Gladstone Regional Council of \$561,942.

Gladstone Regional Council's day labour workforce completed the works which included vegetation and tree clearing, shoulder widening and formation, table drain improvements, placement of pavements including pavement overlays to increase strength, removal and replacement of failing stormwater culverts and applying a two coat bitumen seal to a width of eight meters.

The improvements complement previous works of the same scope on Mt Larcom Bracewell Road which have taken place over the past five years and will provide safer and improved access to the Bracewell area for school buses and rural properties.

*Submitted by Akm Azam, Technical Officer, Road Services, Gladstone Regional Council and member of the Gladstone RRTG*

Mt Larcom Bracewell Road before



Mt Larcom Bracewell Road after the project



### 3.7 Brisbane Metro Alliance RRTG, Rochedale State School Project, Rochedale

Located in Brisbane's south-east, Rochedale State School has more than 900 students enrolled. Prior to works commencing, the school did not have an off-street drop-off/pick-up area, despite the large number of students in attendance at the school.

After consultation with the Rochedale State School P&C, \$800,000 of funding was allocated to undertake works in 2014-15, comprising \$400,000 from TIDS and \$400,000 from Brisbane City Council. The project was focused on delivering upgrades to the existing drop-off and pick-up areas and car park in order to:

- improve safety and accessibility for children and parents attending Rochedale State School
- relieve traffic congestion on Rochedale Road during peak hour traffic and school times
- improve traffic flow and efficiency within the Rochedale State School during school peak hours.

During the concept design phase, the project team met with the Rochedale State School representatives, together with the local Councillor, on a number of occasions. This consultation process allowed feedback and suggestions from the school and the local community to be integrated ahead of the concept plan being finalised.

The project's scope of works included 56 short-term parking bays, two disabled parking bays, a pick-up/drop-off area allowing four cars to stop at one time, a vehicle turnaround bay and a queuing area. Construction for the project commenced in March 2015 and was completed in May 2015, with works delivered under budget and ahead of the anticipated completion date.

The upgrades improved safety for parents and guardians during school drop-offs and pick-ups, eased congestion within the school and Rochedale Road through the relocation of the drop-off and pick-up zones and extended the capacity of the school carpark.

Feedback on the completed works was very positive from Rochedale State School and the local community, with one letter from a member of the school community noting, "It is such a wonderful safe addition to our school. It has changed traffic conditions and driver frustrations. It has removed many parking problems and made parents feel safer in our community."

*Submitted by Bruce Cunneen, Business Performance Manager, Transport Planning & Strategy, Brisbane Infrastructure, Brisbane City Council and Brisbane Metro Alliance RRTG*

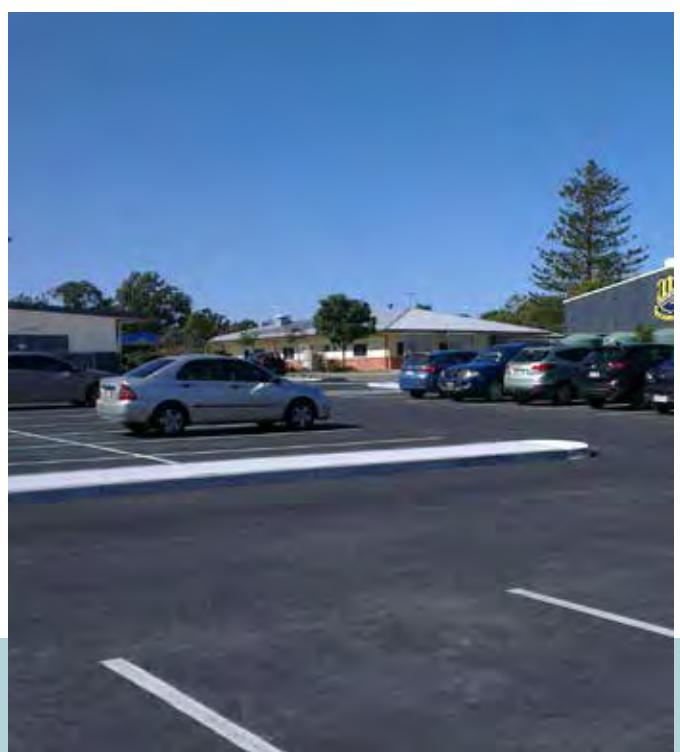
Rochedale State School before



Rochedale State School after the project



Rochedale State School after the project





### 3.8 Northern SEQ, RRTG, Sippy Downs Drive – Stage 3, Sippy Downs

Sippy Downs Drive is the main access to the developing Sippy Downs Town Centre, located within the Sunshine Coast region. When complete, the town centre will service commercial, shopping, business and technology precincts as well the Sunshine Coast University, Chancellor State College, Sienna Catholic College and a planned Business and Technology Precincts.

The university, college and school combined with the commercial precinct generate large volumes of traffic currently in the order of 6,500 vehicles each day, with traffic concentrated in the morning and afternoon school drop-off and pickup periods.

Construction of Stage 3 of Sippy Downs Drive commenced in April 2014 and was completed in May 2015 at a total cost of \$3.2 million, including \$1.15 million of TIDS funding over two years. The planning, design, construction and supervision of the works were undertaken by the workforce of the Sunshine Coast Regional Council and the project was completed on time, within budget and with no lost time due to injuries or incidents. Many locally based sub-contractors were also involved in the project.

In addition to the provision of TIDS funding, Council was greatly assisted by the contribution of the following organisations to the success of the project:

- Energex - contributed 50% of the cost to underground the power supply
- Department of Transport & Main Roads contributed a cycleway grant contribution of \$350,000
- Habitat Developments funded the cost of the traffic signals and turning lanes into their site
- Siena Catholic College and Church agreed to the acquisition of a 1m strip of land and contributed to the cost of an additional access road into the school.

Project statistics to date include:

- installation of approximately 360m of stormwater drainage pipes and associated drainage pits, approximately 900m of sub soil drainage.
- excavation of over 8,000m<sup>3</sup> of material
- installation of over 5,000m<sup>3</sup> of road pavement gravel
- installation of approximately 1050m of kerbs
- installation of approximately 1580m<sup>3</sup> of footpath.

- installation of approximately 1800 tonne of asphalt.
- installation of new street & pedestrian lighting and traffic signals.
- installation of approximately 2,900 trees and plants.

The new pedestrian, cycling and road improvements will greatly increase the safety and amenity for all users of this busy and growing area.

*Submitted by Chris Loveday, Coordinator Asset Management, Sunshine Coast Council and member of the Northern SEQ RRTG.*

#### Sippy Downs Drive before



#### Sippy Downs Drive after the project





# 4 Supporting State-wide Capability Improvements



18



## 4 Supporting State-wide Capability Improvements

Each year funding is made available to all Regional Roads and Transport Groups (RRTGs) for capability improved projects that align with core Roads and Transport Alliance functions through the State-wide Capability Development Fund (SCDF). These initiatives are designed to yield regional and State-wide benefits, both for transport users and road authorities.

### 4.1 State-wide Capability Development Fund projects 2014-15

Project Name	Project Description	RRTG	SCDF Budget (\$)
<b>Program Coordinator / Superintendent for Joint Bitumen Reseal Project</b>	Bowen Basin engaged a Program Coordinator / Superintendent to deliver the RRTG's 2014-15 Joint Bitumen Reseal Project. This work supported regional collaboration and capability building, in particular joint purchasing and resource sharing.	Bowen Basin	38,250
<b>Erosion and Sediment Control Training</b>	Bowen Basin received funding for training to improve the overall environmental management skills of Council staff carrying out maintenance and construction work. Gladstone and Rockhampton RRTGs also participated. The training was delivered by IPWEAQ through O2 Environment + Engineering.	Bowen Basin	13,050
<b>Works Supervisor Training</b>	Bowen Basin received funding for training to improve the leadership and supervisory skills of Council staff carrying out construction and maintenance works.	Bowen Basin	7,150
<b>Coordinator for Joint Bitumen Reseal Asphalt Overlay Project</b>	Far North Queensland engaged a Program Coordinator to deliver the RRTG's 2014-15 Joint Bitumen Reseal and Asphalt Overlay Project.	Far North Queensland	37,500
<b>Diploma of Local Government Administration (Asset Management)</b>	Far North Queensland received funding for training to enhance their asset management skills and lead to improved decision making regarding their infrastructure.	Far North Queensland	25,600
<b>Works Supervisor Training</b>	Gladstone received funding for training to improve the leadership and supervisory skills of Council staff carrying out construction and maintenance works.	Gladstone	21,450
<b>Professional Certificate in Asset Management Planning</b>	Funding provided for IPWEA's online training course focussed on asset management planning and implementation. Bowen Basin and Rockhampton RRTGs also participated.	Gladstone	11,000
<b>Professional Certificate in Asset Management Planning</b>	Funding provided for IPWEA's online training course focussed on asset management planning and implementation.	North West Queensland	10,000
<b>Working Safely with Bitumen Training</b>	This was the first safety related training that Outback had undertaken. With new expertise in handling bitumen, the group is now better positioned to achieve a safer work environment for projects involving paving.	Outback	10,980
<b>Supervisors and Foreman Workshop</b>	Outback received funding to attend a forum conducted by IPWEA on best practice road construction techniques for supervisors and foremen, as well as project administration so they can enhance safety initiatives and streamline projects.	Outback	9,000



Project Name	Project Description	RRTG	SCDF Budget (\$)
<b>Structures Information System</b>	Outback received funding to purchase the ARRB Structures Information System to enable more efficient and detailed data storage and assist with management and maintenance of infrastructure.	Outback	2,457
<b>Regional Airport Plan</b>	Outback received funding to develop a Regional Airport Plan. Opus was engaged to oversee the tender process in 2014-15. The Regional Airport Plan is due to be completed next financial year, and will enable the RRTG to achieve consistent asset data on 20 regional airports.	Outback	1,500
<b>Professional Certificate in Asset Management Planning</b>	Funding provided for IPWEA's online training course focussed on asset management planning and implementation.	Outback	1,250
<b>Urban Stormwater Training</b>	Rockhampton received funding to undertake Urban Stormwater Drainage training. The course improved the skills, knowledge and confidence of staff in designing efficient, effective and fit-for-purpose urban stormwater drainage solutions.	Rockhampton	4,000
<b>Technical Coordinator Services</b>	South West received funding for their Technical Coordinator role from 2012-13 to 2014-15 to bring the group up to best practice, in line with the recommendations from their internal review in 2011-12.	South West	6,395
<b>Specifications Alignment / Adaptation Project</b>	Southern received funding to update and adapt specifications to AUS-SPEC on a regional basis with an aim to improve construction and development specifications.	Southern	20,000
<b>Industry Workshop for Registered Engineers</b>	Funding provided for a workshop to clarify aspects of RPEQ and PE Act obligations, as well as meet a gap in practical advice for new RPEQs and others in the engineering industry.	Southern	15,000
<b>Roughness Meters</b>	Southern Border received funding to purchase three roughness meters through ARRB, which included the associated software and training, to support their road quality assessments and lead to improved capability when comparing and analysing which roads are in need of repair.	Southern Border	19,605
<b>LGAQ administration of the Roads and Transport Alliance</b>	Ongoing annual allocation to the LGAQ for participation in the Roads and Transport Alliance.	State-wide	160,000
<b>Regional First and Last Mile Pilot</b>	Funding provided over 2013-14 to 2014-15 to build on the outcomes of TMR's Heavy Vehicle Action Plan (HVAP) by applying the methodologies developed to identify freight access issues at a regional and local level. Eastern Downs and Western Downs are the target location for the pilot.	State-wide	85,803
<b>Workforce Sustainability Project</b>	Funding provided since 2013-14 to identify road maintenance and renewal delivery arrangements that are sustainable for councils and RoadTek. KPMG's Report <i>Sustaining Road Work in Rural and Remote Queensland</i> was delivered mid-June 2015.	State-wide	66,000
<b>IPWEAQ Technical Chairs Forum costs</b>	Funding provided to IPWEAQ for costs associated with the Technical Chairs Forum at the IPWEAQ State Conference in October 2014.	State-wide	3,000
<b>Total</b>			<b>568,990</b>

## 4.2 Funding support for key initiatives

### 4.2.1 Wide Bay Burnett RRTG, Regional Road Safety Strategy

In 2012, Wide Bay Burnett RRTG (WBBRRTG) agreed to develop a Regional Road Safety Strategy and Action Plan with the aim of improving road safety on all roads across the region. This would enable a coordinated approach to road safety and increase the RRTG's local road safety capability.

Safety consultant, Alan Meares, was engaged to establish the WBBRRTG Regional Road Safety Strategy. While project costs would have been prohibitive for an individual council, sharing the financial burden amongst RRTG Members improved its affordability and allowed the project to be undertaken co-operatively.

The project commenced in 2012 and was completed in 2014 (delays arose as a result of the significant flood events in the region during this time). The project encompassed the following elements:

- analysis of road crash data for each of the five councils
- consultation with key stakeholders through a series of workshops held in each council area
- preparation of both regional and local council profiles based on the findings from the workshops
- development of a strategy document
- development of a regional action plan
- development of local action plans for each council

The WBBRRTG Regional Road Safety Plan has been successful in raising greater awareness of road safety amongst councils. The RRTG is now better equipped to address road safety issues in their region, from improving road user behaviour to providing engineering solutions by understanding the risks and having locally relevant actions to implement.

Without the assistance of the Roads and Transport Alliance Board, who provided \$48,125 matched on a 50/50 basis through the SCDF to help fund this initiative, this major piece of work would have been challenging to organise and deliver.

*Submitted by Wide Bay Burnett RRTG*

### 4.2.2 Bowen Basin, Gladstone and Rockhampton RRTGs, Erosion and Sediment Control Training

Identifying a need to improve the overall environmental management skills of its staff and to reduce risk and liability from its operations, member councils of the Bowen Basin, Gladstone and Rockhampton RRTGs undertook IPWEAQ Erosion and Sediment Control training (Level 2 Site Managers and Supervisors) in mid-February. Approximately 60 staff attended.

Over a three day period, a wide cross-section of staff from works, technical and development departments at various levels from field supervisors to middle management covered content including:

- best practice environmental management
- legislation
- understanding construction and maintenance requirements
- soils
- conceptual erosion and sediment control plans
- Emerson's aggregate testing
- pricing erosion and sediment control
- auditing of active construction site
- sediment basin construction and operation
- bench testing of flocculants
- revegetation and stabilization and records and reporting.

Of those who attended the course, 90% rated the course as either "Useful" or "Extremely Useful", with no attendees rating it as "Not Useful".

Holding the courses on site was of great benefit to the councils involved, allowing for more participants to be involved, savings on travel and accommodation and, most importantly, travel time which would have ordinarily taken staff away from their normal duties for greater periods.

*Submitted by Gerard Read, Technical Coordinator for Bowen Basin, Gladstone and Rockhampton RRTGs.*



### 4.2.3 Far North Queensland RRTG, Diploma of Local Government Administration (Asset Management)

In 2014-15 Far North Queensland RRTG (FNQRRTG) collaborated to have 16 of their council staff participate in the LGAQ-run Diploma of Local Government Administration (Asset Management). Staff from six councils undertook the eight day course which was delivered from March to June 2015. Councils that participated were Cairns Regional Council (four staff), Cassowary Coast Regional Council (three staff), Douglas Shire Council (one staff), Mareeba Shire Council (two staff), Hinchinbrook (two staff), Tablelands Regional Council (three staff) and FNQROC (one staff).

FNQRRTG identified an asset management skills shortage in their region and acted on this by contacting LGAQ to identify a suitable training option to support the continual professional development of its staff (LGAQ is also a Registered Training Organisation, LGAQ Total Solutions, for providing Queensland local government professional development and workforce training). FNQRRTG then applied for SCDF and was successful in receiving \$25,600 to complement their own training investment.

The Diploma of Local Government Administration (Asset Management) is specifically designed for local government staff and focuses on meeting staff needs while also meeting vocational education and training Quality Framework standards. The Asset Management course covered the following areas:

- Working with others in local government
- Working effectively in local government
- Devising and conducting community consultations
- Acquiring and disposing of assets

- Developing a risk management strategy for council's assets
- Developing an asset management strategy for council
- Developing, implementing and monitoring a programmed maintenance system of council's assets
- Measuring costs of providing and maintaining council assets
- Providing information on asset management programs and practices
- Reporting on assets in accordance with statutory and public reporting requirements.

Council staff participated in the course in their own region, which provided a cost and time benefit. The course was very well received and provided effective and relevant training to support:

- informed decision-making on infrastructure
- improved asset management plans and financial planning
- enhanced risk management processes and reduced risk for councils
- better maintenance and capital works prioritisation.

*Submitted by Steven Cosatto, Technical Coordinator for FNQ RRTG*



#### 4.2.4 Outback RRTG, Supervisors and Foreman Training Workshop

Three member councils of the Outback RRTG (ORRTG) (Barcaldine, Blackall-Tambo and Longreach Regional Councils) and TMR Central West district joined forces in March 2015 to attend a training session facilitated by the Institute of Public Works Engineering Australia (IPWEA) for their supervisors and foremen.

Funded by the SCDF, the workshop showcased a range of new technologies and techniques, increased the knowledge of participants in best practice road construction techniques and project administration, and identified any existing gaps in training. Through practical scenarios, site visits and hands on learning ORRTG Members covered a broad range of topics including:

- Planning of projects
- Compaction – plant selection & productivity; soil compaction additives
- Surveying – latest equipment, basic set-out and level control
- Drainage, and drainage structures, installation; hydraulic capacity
- Financial Planning
- Supervising, leadership and working with others
- Gravel roads
- Soil testing – understanding soil properties
- Environmental induction
- Estimating and calculations
- Culverts: use of concrete and aggregates; soil relationships
- Role of the Supervisor – Planning and managing projects
- Transfer of details from drawings to works on the ground
- Road construction and maintenance
- Traffic control at worksites.

The training was well received with ORRTG participants looking forward to sharing their knowledge with other members, enhancing safety initiatives and streamlining projects.

*Submitted by John Roworth, Technical Committee Chair of the ORRTG Technical Committee*





# 5 State-wide Financial Reports

24





## 5 State-wide Financial Reports

### Roads and Transport Alliance TIDS

The Roads and Transport Alliance TIDS program has 103% expenditure for the 2014-15 financial year. A summary of performance by RRTG is detailed below.

Regional Roads and Transport Group	No. of Projects	Budget (\$'000)	Expenditure (\$'000)	Spend (%)
Wide Bay Burnett	28	3,086	3,930	127 %
Outback	18	3,182	3,184	100 %
Northern SEQ	19	1,813	1,814	100 %
Gladstone	6	536	536	100 %
Southern	9	1,392	1,392	100 %
Eastern Downs	6	1,398	1,398	100 %
Brisbane Metro Alliance	11	1,048	1,048	100 %
Far North Queensland	11	2,633	2,633	100 %
Rockhampton	6	676	676	100 %
Western Downs	7	1,355	1,355	100 %
Whitsunday	4	934	934	100 %
Bowen Basin	7	2,305	2,305	100 %
South West	19	3,432	3,432	100 %
North Queensland	13	1,743	1,743	100 %
North West Queensland	13	2,834	2,834	100 %
Scenic Valleys	10	1,129	1,128	100 %
Southern Border	7	1,128	1,125	100 %
<b>Total</b>	<b>194</b>	<b>30,623</b>	<b>31,466</b>	<b>103 %</b>



## State-wide as at 30 June 2015 Expenditure (Forecast vs Actual)



2014 Regional Roads and Transport Group Assembly

## State-wide TIDS program

The below table shows the proportion of project types funded under the 2014-15 Roads and Transport Alliance TIDS program.

Infrastructure Type	Expenditure (\$'000)	Percentage of Total
<b>Local Roads of Regional Significance (LRRS)</b> Works on lower order state-controlled roads or higher order local government-controlled roads	27,413	87.12%
<b>State Network</b> Works funded by RRTGs to high priority projects on the state-controlled road network	1,170	3.72%
<b>Safe School Travel</b> Works to improve the safety of children travelling to and from school, including cycleways at existing schools	1,756	5.58%
<b>Non - LRRS</b> Works on local government roads that are not located on the LRRS network	793	2.52%
<b>Capability development</b> RRTGs may allocate up to 2.5% of funding for capability development and/or improvement purposes without having to be matched	334	1.06%
<b>Cycleways</b> Works on cycle facilities	0	0.00%
<b>Airport Infrastructure</b> Works that enhance the safety and accessibility of airports	0	0.00%
<b>Total</b>	<b>31,466</b>	<b>100%</b>

## State-wide Capability Development Fund

The State-wide Capability Development Fund (SCDF) projects have 100% expenditure for the 2014-15 financial year. A summary of performance by RRTG is detailed below.

Regional Roads and Transport Group	No. of Projects	Budget (\$'000)	Expenditure (\$'000)	Spend (%)
Bowen Basin	3	58	58	100%
Far North Queensland	2	63	63	100%
Gladstone	2	32	26	100%
North West Queensland	1	10	10	100%
Outback	5	25	25	99%
Rockhampton	1	4	4	100%
South West	1	6	6	100%
Southern	2	35	35	100%
Southern Border	1	20	20	100%
State-wide	4	315	315	100%
<b>Total</b>	<b>22</b>	<b>569</b>	<b>563</b>	<b>100%</b>



Members of the Outback RRTG presenting their Regional Freight Strategy



# 6 Regional Roads and Transport Group profiles





# Far North Queensland RRTG

## RRTG Members

Cairns Regional Council  
 Cassowary Coast Regional Council  
 Cook Shire Council  
 Croydon Shire Council  
 Douglas Shire Council  
 Etheridge Shire Council  
 Mareeba Shire Council  
 Tablelands Regional Council  
 Wujal Wujal Aboriginal Shire Council  
 Yarrabah Aboriginal Shire Council  
 TMR's Far North District

## RRTG Chair

Councillor Peter Scott, Mayor,  
 Cook Shire Council

## RRTG Technical Committee Chair

David Goodman, Works  
 Manager, Cassowary Coast  
 Regional Council

## Technical Coordinator

Steven Cosatto, Far North  
 Queensland Regional  
 Organisation of Councils



## Roads and Transport Alliance TIDS

Project Number	Description	As at 30 June 2014-15 (\$'000)
214/LGSR/23	Aumuller Street - Gatton Street - Intersection improvements	437
<b>Cairns</b>		437
214/LGSR/5	Cape Tribulation Road - Construct crossing and approaches - Woobadda Creek - 21.4 to 21.5km	297
<b>Douglas</b>		297
216/LGSR/31	Walter Lever Estate Road - Structural rehabilitation - Schrock's Bridge - 0.47 to 0.54km	257
<b>Cassowary Coast</b>		257
220/LGSR/10	Hope Street - Construct footpath/bikeway - Seagrem to Walker - 0 to 2.0km	193
<b>Cook</b>		193
221/LGSR/5	Croydon Richmond Rd - Construct to new two lane sealed standard - 43.5 to 46.5km	300
<b>Croydon</b>		300
226/LGSR/5	Forsayth - Einasleigh Rd - Construct to two lane sealed standard - 64.20 to 66.20km	343
<b>Etheridge</b>		343
264/LGSR/19	Anzac Avenue - Shoulder widening and line marking - Hastings Drive to Feretti Close - 0.50 to 1.17km	61
264/LGSR/30	Black Mountain Road - Upgrade bridge - Bridge No. 6 - 12.90 to 12.91km	124
264/LGSR/31	Black Mountain Rd - Upgrade bridge - Flaggy Creek - 17.80 to 17.82km	155
264/LGSR/39	RRTG Administration	68
<b>Mareeba</b>		408
264/LGSR/9	Tully Falls Road - Upgrade Bridge - Lawyer Ck - 6.00 - 6.10km	397
<b>Tablelands</b>		397
<b>Total</b>		<b>2,633</b>

## State-wide Capability Development Fund

Project Number	Description	As at 30 June 2014-15 (\$'000)
D03/LGSL/1	Diploma of Local Government Administration (Asset Management)	26
R03/LGSL/2	Coordinator for Joint Bitumen Reseal Asphalt Overlay Project	38
<b>Total</b>		<b>63</b>



# North Queensland RRTG

## Legend

- Local Government Local Roads of Regional Significance
- Transport and Main Roads Local Roads of Regional Significance
- Other state-controlled roads and franchised motorways

### RRTG Members

Townsville City Council  
 Burdekin Shire Council  
 Charters Towers Regional Council  
 Hinchinbrook Shire Council  
 TMR's Northern District

### RRTG Technical Committee Chair

Neil Allen, Director Infrastructure Services, Townsville City Council

### Technical Coordinator

Owen Montgomery, Regional Roads Program Coordinator, Townsville City Council

### RRTG Chair

Cr Trevor Roberts, Infrastructure Committee Chair, Townsville City Council



## Roads and Transport Alliance TIDS

Project Number	Description	As at 30 June 2014-15 (\$'000)
142/LGSA/5	Local Road Network - Bridge repairs - Various locations	143
217/LGSR/14	Millchester Road - Undertake safety improvements - York Street	4
217/LGSR/20	Buchanan Creek - Culverts	231
217/LGSR/23	Blackjack Road - Reseal - Mosman Street - Flinders Highway	58
<b>Charters Towers</b>		<b>436</b>
212/LGSR/19	Old Home Hill Road - Upgrade intersection	259
212/LGSR/20	Brown Road - Road and culvert works	3
<b>Burdekin</b>		<b>261</b>
233/LGSR/5	Hawkins Creek Road - Rehabilitate bridge/s and culvert/s	120
61/LGSA/26	Mount Fox Road - Reseal - bitumen chip - Stage 2	41
61/LGSC/1	Wallaman Falls Road - Widen and overlay - Stage 1	100
<b>Hinchinbrook</b>		<b>261</b>
268/LGSR/10	William Ross High School - Construct footpath - William Angliss Drive	50
268/LGSR/19	Hugh Street - Intersection upgrade - Bayswater Road	90
268/LGSR/7	Ingham Road - Asphalt resurfacing - Woolcock Street - Enterprise Street	281
268/LGSR/8	Beck Drive - Widen and seal shoulders - The Ring Road - Parkside Drive	363
<b>Townsville</b>		<b>784</b>
<b>Total</b>		<b>1,743</b>

# North West Queensland RRTG

## RRTG Members

Burke Shire Council  
 Carpentaria Shire Council  
 Cloncurry Shire Council  
 Doomadgee Aboriginal Shire Council  
 Flinders Shire Council  
 Kowanyama Aboriginal Shire Council  
 McKinlay Shire Council  
 Mornington Shire Council (observer)  
 Mount Isa City Council  
 Richmond Shire Council  
 TMR's North West District

## RRTG Chair

Councillor John Wharton AM,  
 Mayor, Richmond Shire Council

## RRTG Technical Committee Chair

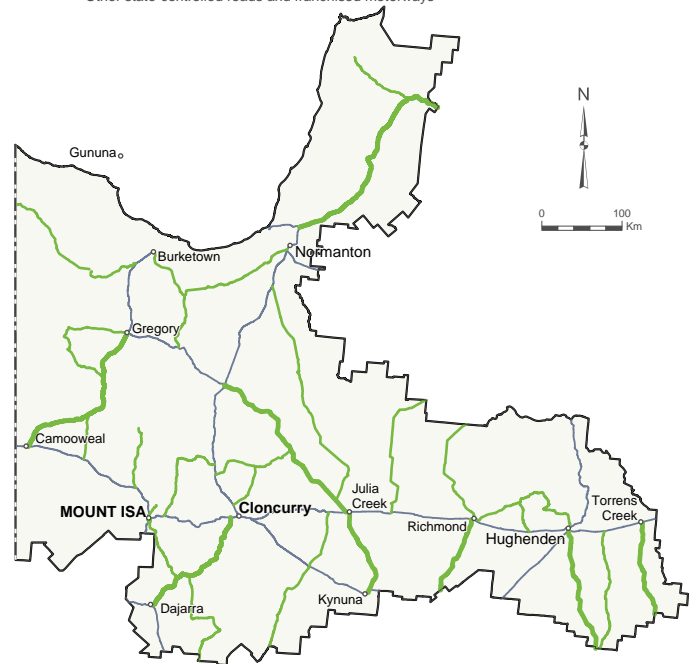
Graham Osborne, Manager  
 Richmond Shire Council

## Technical Coordinator

Gerard Read, GWR Civil  
 Engineering Management

## Legend

- Local Government Local Roads of Regional Significance
- Transport and Main Roads Local Roads of Regional Significance
- Other state-controlled roads and franchised motorways



## Roads and Transport Alliance TIDS

Project Number	Description	As at 30 June 2014-15 (\$'000)
213/LGSR/7	Doomadgee Road West - Construct to new sealed two lane standard - 84.00 - 89.00km	400
<b>Burke</b>		400
215/LGSR/7	Burketown Road - Install two floodway crossings - 88.84 - 89.13km	400
<b>Carpentaria</b>		400
219/LGSR/13	Sedan Dip Road - Construct to new sealed two lane standard - 38.55 - 43.55km	400
<b>Cloncurry</b>		400
227/LGSR/6	Old Richmond Road - Form and seal pavement - 5.50 - 8.50km	323
227/LGSR/7	Prairie-Muttaborra Road - Widen formation to 8.0m wide - 140.60 - 156.60km	57
227/LGSR/8	White Mountains Road - Construct to new unsealed standard - 0 - 32.15km	58
227/LGSR/9	Various Roads, Dalkeith Road - Install new floodway	31
<b>Flinders</b>		468
244/LGSR/1	Gilliat-McKinlay Road - Construct to new sealed two lane standard - 70.28 - 77.55km	400
<b>McKinlay</b>		400
246/LGSR/1	Riversleigh Road - Repair of concrete floodway including approaches - 34.54 - 34.64km	150
246/LGSR/13	Activity Road - Pavement rehabilitation	75
<b>Mount Isa</b>		225
257/LGSR/10	Richmond - Croydon Road - Concrete causeway - 132.20 - 132.35km	115
257/LGSR/5	RRTG Administration	53
257/LGSR/9	Richmond - Croydon Road - Resheeting, reformation and two coat seal - 108.48 - 113.88km	373
<b>Richmond</b>		541
<b>Total</b>		<b>2,834</b>

## State-wide Capability Development Fund

Project Number	Description	As at 30 June 2014-15 (\$'000)
227/LGSL/3	Professional Certificate in Asset Management Planning	10
<b>Total</b>		<b>10</b>



# Whitsunday RRTG

## RRTG Members

Mackay Regional Council  
 Whitsunday Regional Council  
 TMR's Mackay/Whitsunday District

## RRTG Chair

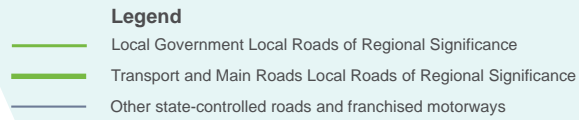
Councillor Jennifer Whitney, Mayor, Whitsunday Regional Council

## RRTG Technical Committee Chair

Jason Devitt, Director (Engineering and Commercial Infrastructure), Mackay Regional Council

## Technical Coordinator

Graeme Hawes, Manager Technical Services, Mackay Regional Council



## Roads and Transport Alliance TIDS

Project Number	Description	As at 30 June 2014-15 (\$'000)
242/LGSR/17	Program Development	19
242/LGSR/9	Connors Road - Construct to sealed standard - Crichtons Road - Cooks Lane	128
<b>Mackay</b>		<b>147</b>
269/LGSR/4	Hinschen Street - Rehabilitate pavement - 0 - 0.20km	474
269/LGSR/6	Strathmore Road - Rehabilitate pavement - 0 - 0.50km	313
<b>Whitsunday</b>		<b>787</b>
<b>Total</b>		<b>934</b>

# Rockhampton RRTG

## RRTG Members

Livingstone Shire Council  
 Rockhampton Regional Council  
 TMR's Fitzroy District

## RRTG Chair

Councillor Margaret Strelow, Mayor,  
 Rockhampton Regional Council

## RRTG Technical Committee Chair

Martin Crow, Manager Engineering Services,  
 Rockhampton Regional Council

## Technical Coordinator

Gerard Read, GWR Civil Engineering  
 Management



## Roads and Transport Alliance TIDS

Project Number	Description	As at 30 June 2014-15 (\$'000)
258/LGSR/18	Stanwell - Waroula Road - Rehabilitate and overlay - 19.80 - 20.70km	120
258/LGSR/7	Capability and development	17
279/LGSR/1	North Street - Reconstruction - Campbell Street - West Street	210
279/LGSR/2	Glenmore Road - Reconstruction - Rail Xing to new bridge	150
279/LGSR/3	Thozet Road - Reconstruction - Dempsey Street - Elphinstone Street	148
279/LGSR/4	Glenroy Road - Gravel resheet - 13.35 - 13.75km	32
<b>Rockhampton</b>		<b>676</b>
<b>Total</b>		<b>676</b>

## State-wide Capability Development Fund

Project Number	Description	As at 30 June 2014-15 (\$'000)
279/LGSL/1	Urban Stormwater Training	4
<b>Total</b>		<b>4</b>

34



# Bowen Basin RRTG

## RRTG Members

Banana Shire Council  
 Central Highlands Regional Council  
 Isaac Regional  
 Woorabinda Aboriginal Shire Council  
 TMR's Fitzroy and Mackay/Whitsunday Districts

## RRTG Chair

Councillor Peter Maguire, Mayor,  
 Central Highlands Regional Council

## RRTG Technical Committee Chair

John Walker, Manager Technical Services, Banana Shire Council

## Technical Coordinator

Gerard Read, Shepherd Services, Bowen Basin



## Roads and Transport Alliance TIDS

Project Number	Description	As at 30 June 2014-15 (\$'000)	35
204/LGSR/12	Theodore - Moura Road - Realign, drainage, pavement and seal - 1.11 - 2.45km	400	
204/LGSR/20	Crowsdale Camboon Road - Drainage improvements - 0 - 10.00km - Various locations	75	
204/LGSR/35	Nathan Road - Construct to new sealed standard - 23.60 - 26.60km	236	
204/LGSR/36	Gibihi Road - Widen and seal - 4.40 - 8.90km	55	
<b>Banana</b>		<b>766</b>	
225/LGSR/20	Arcadia Valley Road - Pave and seal - 70.6 - 74.60km	500	
225/LGSR/21	Comet River Road - Pave and seal - 39.65 - 42.75km	387	
<b>Central Highlands</b>		<b>887</b>	
236/LGSR/16	Grasstree Road Deviation - Construct deviation - 10.50 - 16.70km	652	
<b>Isaac</b>		<b>652</b>	
<b>Total</b>		<b>2,305</b>	

## State-wide Capability Development Fund

Project Number	Description	As at 30 June 2014-15 (\$'000)	58
225/LGSL/4	Works Supervisor Training	7	
D04/LGSL/1	Program Coordinator / Superintendent for Joint Bitumen Reseal Project	38	
D04/LGSL/2	Erosion and Sediment Control Training	13	
Gladstone and Rockhampton RRTGs also participated in this training.			
<b>Total</b>		<b>58</b>	

# Outback RRTG

## RRTG Members

Barcaldine Regional Council  
 Barcoo Shire Council  
 Blackall-Tambo Regional Council  
 Boulia Shire Council  
 Diamantina Shire Council  
 Longreach Regional Council  
 Winton Shire Council  
 TMR's Central West District

## RRTG Chair

Councillor Butch Lenton, Mayor,  
 Winton Shire Council

## RRTG Technical Committee Chair

David Timms, Director of  
 Engineering, Winton Shire  
 Council

## Technical Coordinator

Jill Williams, Opus International  
 Consultants



## Roads and Transport Alliance TIDS

Project Number	Description	As at 30 June 2014-15 (\$'000)
205/LGSR/10	Barcaldine Downs Road - Widen and seal - Various locations	273
205/LGSR/13	Gidyea Street (Cedar Street to Pine St) - Barcaldine State School - Rehabilitate pavement	18
205/LGSR/21	Dryden Street - Improve drainage - Various locations	13
205/LGSR/22	Milton Street - Alpha State School - Line marking of school crossing	8
<b>Barcaldine</b>		<b>312</b>
206/LGSR/5	Winton - Jundah Road - Install floodway - 178.20 - 178.40km	205
206/LGSR/8	Stratford Street, Stonehenge - Widen, seal, kerb and channel to Stonehenge Caravan Park frontage	40
<b>Barcoo</b>		<b>245</b>
208/LGSR/8	Avington Road - Gravel resheeting - Sections: 23.11 - 30.52km	273
<b>Blackall-Tambo</b>		<b>273</b>
209/LGSR/10	Boulia - Tobermorey Road - Gravel resheeting - 88.00 - 98.00km	205
<b>Boulia</b>		<b>205</b>
223/LGSR/3	Adelaide Street, Birdsville - Streetscape - Various locations	50
<b>Diamantina</b>		<b>50</b>
241/LGSR/5	Morella - Silsoe Rd - Rehabilitate pavement - 1.38 - 11.81km	273
<b>Longreach</b>		<b>273</b>
270/LGSR/5	Olio-Muttaburra Road - Install, form and improve drainage - Various locations	450
270/LGSR/8	Olio - Muttaburra Road - Install floodways - Various locations	205
<b>Winton</b>		<b>655</b>
<b>Total</b>		<b>2,014</b>

### State Network (RRTG funded)

Project Number	Description	As at 30 June 2014-15 (\$'000)
205/573/1	Barcaldine - Aramac Road - Widen and seal - Sections: 52.70 - 54.90km	312
<b>Barcaldine</b>		312
206/717/5	Jundah - Quilpie Road - Pave and seal - 70.56 - 80.56km	3
<b>Barcoo</b>		3
208/443/2	Alpha - Tambo Road - Pave and Seal - 117.57 - 120.07km	72
<b>Blackall-Tambo</b>		72
223/80A/10	Betoota Bypass on Birdsville Developmental Road - Pave and seal - Sections: 103.77 - 107.90km	419
223/93C/1	Bloodwood on the Diamantina Developmental Road (Windorah - Bedoure) - Pave and seal - 347.50 - 350.50km	24
<b>Diamantina</b>		442
241/5705/5	Cramsie - Muttaborra Road - Pave and seal - Sections: 54.15 - 56.76km	340
<b>Longreach</b>		340
<b>Total</b>		<b>1,170</b>

### State-wide Capability Development Fund

Project Number	Description	As at 30 June 2014-15 (\$'000)
206/LGSL/11	Supervisors and Foreman Workshop	9
206/LGSL/12	Professional Certificate in Asset Management Planning	1
206/LGSL/13	Regional Airport Plan	2
<i>Outback RRTG's Regional Airport Plan is due to be completed next financial year and project funding has been programmed over two years.</i>		
206/LGSL/9	Structures Information System	2
241/LGSL/5	Working Safely with Bitumen Training	11
<b>Total</b>		<b>25</b>



# Wide Bay Burnett RRTG

## RRTG Members

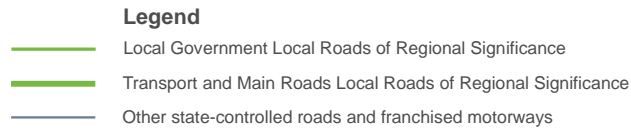
Bundaberg Regional Council  
 Fraser Coast Regional Council  
 Gympie Regional Council  
 North Burnett Regional Council  
 South Burnett Regional Council  
 TMR's Wide Bay/Burnett District

## RRTG Chair

Councillor Mal Forman, Mayor, Bundaberg Regional Council

## RRTG Technical Committee Chair

Warren Paulger, Consultant Engineer



## Roads and Transport Alliance TIDS

38	Project Number	Description	As at 30 June 2014-15 (\$'000)
	211/LGSR/10	Kolan River Bridge on Monduran Rd - 2.77 - 2.90km	42
	211/LGSR/15	Barolin Street - Construct to new sealed two lane standard - Burnett Street - Walker Street	227
	211/LGSR/16	Burnett Street - Construct to new two lane seal standard - George Street - Barolin Street	288
	211/LGSR/17	Hughs Road - Construct two lane bypass - Watsons Road - Windermere Road	8
	211/LGSR/20	Windermere Road - Construct roundabout/s - Rifle Range Road	212
	211/LGSR/27	North Bundaberg School Path (90m x 1.5m) - Bundaberg - Gin Gin Road	25
	211/LGSR/28	Goodwood State School Car park (5m x 2m + Bus turnaround)	25
	<b>Bundaberg</b>		<b>828</b>
	228/LGSR/25	Beaver Rock Road, Maryborough - Wide and overlay - 3.12 - 3.98km	13
	228/LGSR/26	Maaroom Road - Widen/overlay/seal - 0 - 3.30km	8
	228/LGSR/28	Glenwood State School Footpath (107m x 2m)	44
	228/LGSR/29	Tinana State School Footpath - lindah Road	15
	228/LGSR/30	Kawungan State School Footpath - Grevillea Street	10
	228/LGSR/31	Bridge Rehabilitation - Nth Aramara Road, Pineview Road, Glenbar-Tiaro Road	147
	228/LGSR/5	RRTG Secretariat	83
	228/LGSR/7	Main Street - Construct to new sealed two lane standard - 0 - 0.25km	582
	<b>Fraser Coast</b>		<b>902</b>



Project Number	Description	As at 30 June 2014-15 (\$'000)
232/LGSH/6	Gympie West State School - Construct concrete pathway along Monkland Street and Parsons Road	59
232/LGSH/7	Victory College - Construct concrete pathway along Hamilton Road and Old Maryborough Road	80
232/LGSI/28	Gympie State High School - Construct cycleway (1.65km x 1.2m) - Rifle Range Road	21
232/LGSR/11	Cedar Pocket Road - Replace bridge/s with culvert/s - 9.90 - 9.92km	264
232/LGSR/14	Cedar Pocket Road - Replace bridge/s with culvert/s - 12.00 - 12.02km	41
232/LGSR/6	Old Maryborough Road, Fraser Road - Nash Road - Upgrade to two lanes	75
232/LGSR/8	Moy Pocket Road - Rehabilitate and widen - 4.70 - 5.90km	12
<b>Gympie</b>		<b>552</b>
249/LGSR/17	Cannindah Road - Replace major culvert/s - 2.90 - 4.50km	59
249/LGSR/22	Gayndah - Mundubbera Road - Construct to new sealed two lane standard - 9.20 - 11.00km	100
249/LGSR/25	Cannindah Road - Construct bridge/s and approaches - 26.00 - 26.03km	262
249/LGSR/27	Gayndah - Mundubbera Road - Construct to new sealed two lane standard - 14.10 - 15.10km	253
<b>North Burnett</b>		<b>674</b>
261/LGSR/13	Gayndah - Hivesville Road - Raise bridge/s - 68.30 - 68.33km	378
261/LGSR/21	Kumbia - Brooklands Road - Replace bridge and approaches - 4.20 - 4.27km (Stuart River)	595
<b>South Burnett</b>		<b>973</b>
<b>Total</b>		<b>3,930</b>

# Gladstone RRTG

## RRTG Members

Gladstone Regional Council

TMR's Fitzroy District

## RRTG Chair

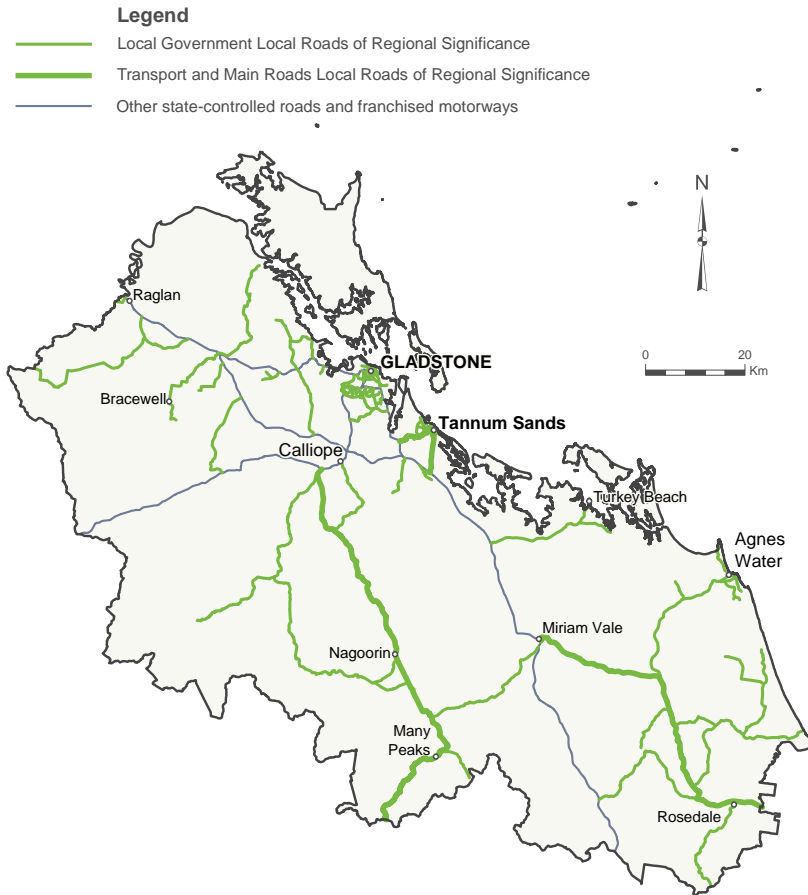
Councillor Gail Sellers, Mayor, Gladstone Regional Council

## RRTG Technical Committee Chair

Paul Keech, Director Engineering Services, Gladstone Regional Council

## Technical Coordinator

Gerard Read, GWR Civil Engineering Management



## Roads and Transport Alliance TIDS

40

Project Number	Description	As at 30 June 2014-15 (\$'000)
229/LGSR/15	Lowmead Road - Construct to new sealed two lane standard - 5.20 - 9.00km	100
229/LGSR/19	Coast Road - Safety improvements - 0 - 17.8km	100
229/LGSR/25	Captain Cook Drive - Asphalt resurfacing - 5.80 - 6.55km	50
229/LGSR/29	Tableland Road - Safety improvements - 9.10 - 12.10km	57
229/LGSR/45	Various Roads - Safety improvements - Various schools	31
229/LGSR/8	Mount Larcom - Bracewell Road - Rehabilitate and widen - 4.50 - 7.50km	198
<b>Gladstone</b>		<b>536</b>
<b>Total</b>		<b>536</b>

## State-wide Capability Development Fund

Project Number	Description	As at 30 June 2014-15 (\$'000)
229/LGSL/5	Works Supervisor Training	21
229/LGSL/7	Professional Certificate in Asset Management Planning	11
<b>Total</b>		<b>32</b>

Bowen Basin and Rockhampton RRTGs also participated. There was a number of indicated participants from Gladstone that could not undertake this course due to the workload associated with TC Marcia recovery.



# Brisbane Metro Alliance RRTG

## RRTG Members

Brisbane City Council

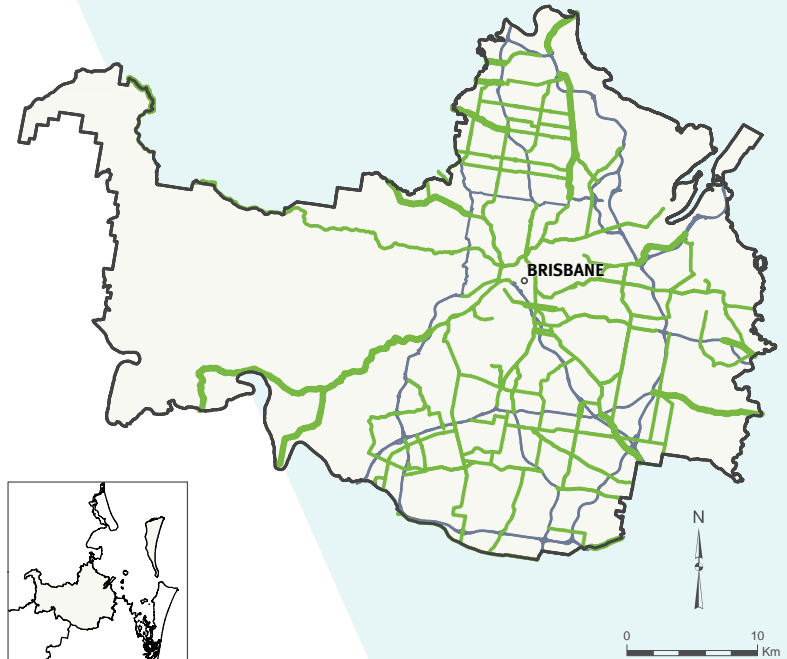
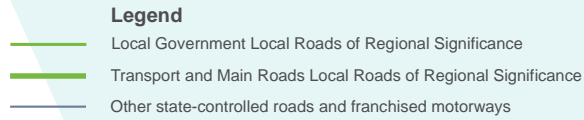
TMR's Metropolitan District

## RRTG Chair

Councillor Adrian Schrunner, Deputy Mayor,  
Brisbane City Council

## RRTG Technical Committee Chair

Scott Stewart, Divisional Manager Brisbane  
Infrastructure, Brisbane City Council



## Roads and Transport Alliance TIDS

Project Number	Description	As at 30 June 2014-15 (\$'000)
201/LGSR/17	Underwood Road - Signalisation of the intersection with right turn pockets	392
201/LGSR/28	Bracken Ridge State High School - Lascelles Street	43
201/LGSR/29	Jindalee State School - Wongaburra Street	155
201/LGSR/30	Holy Family Primary School - Improvements to pedestrian crossing - Clarence Road	13
201/LGSR/31	Grand Avenue State School - Improvements to pedestrian crossing - Grand Avenue	14
201/LGSR/32	Rochedale State High School - Pedestrian crossing facility - Priestdale Road	36
201/LGSR/33	Ferny Grove State School - Improvements to pedestrian crossing - Archdale Road	17
201/LGSR/34	Coorparoo State School - Improvements to pedestrian crossing - Halstead Street	21
201/LGSR/35	Rochedale State School - Provide passenger set-down facilities - Rochedale Road	306
201/LGSR/36	Brisbane Bayside State College - Install pedestrian refuge/s - Wynnum Road	37
201/LGSR/37	Bardon State School - Simpsons Road	15
<b>Brisbane</b>		<b>1,048</b>
<b>Total</b>		<b>1,048</b>

# Northern SEQ RRTG

## RRTG Members

Moreton Bay Regional Council

Noosa Shire Council

Somerset Regional Council

Sunshine Coast Council

TMR's North Coast District

## RRTG Chair

Councillor Dan Hall,  
Somerset Regional Council

## RRTG Technical Committee Chair

Andrew Johnson, Works Engineer,  
Somerset Regional Council

## Technical Coordinator

Warren Paulger, Consultant Engineer



## Roads and Transport Alliance TIDS

Project Number	Description	As at 30 June 2014-15 (\$'000)
250/LGSL/2	Capability and development - Moreton Bay Regional Council	6
250/LGSR/13	South Pine Road, Everton Hills - Road improvements, widening, signals and pathways - 0 - 8.44km	677
<b>Moreton Bay</b>		<b>683</b>
260/LGSL/1	Capability and development - Somerset Regional Council	3
260/LGSR/10	Atkinson Dam Road - Rehabilitate and widen - 4.25 - 6.45km	77
260/LGSR/24	Gregors Creek Road - Widen pavement - 2.20 to 4.00km	136
260/LGSR/25	Kilcoy State School - Footpath adjacent to 'drop down' zone - Seir Street	33
260/LGSR/9	Atkinson Dam Road - Rehabilitate and widen - 0.77 - 24.20km	63
<b>Somerset</b>		<b>312</b>
263/LGSA/4	Evans Street - Duplicate 2 to 4 lanes - 1km north of Maroochydore	269
263/LGSL/2	Capability and development - Sunshine Coast Regional Council	5
280/LGSR/2	Caloundra City Private School - School pedestrian/cycle pathway - Pelican Waters Boulevard	47
280/LGSR/3	Sippy Downs Drive - Upgrade of road - Various locations	327
<b>Sunshine Coast</b>		<b>648</b>
278/LGSR/10	Tewantin State Primary School - Poinciana Ave	20
278/LGSR/11	Tewantin State Primary School - George Street / Moorindil Street intersection	15
278/LGSR/12	Tewantin State Primary School - Werin Street	21
278/LGSR/13	Noosaville State Primary School - Burgess Drive & Lowe Court	27
278/LGSR/14	Noosaville State Primary School - Finney Court	10
278/LGSR/15	Tewantin State Primary School - George Street	63
278/LGSR/16	Sunshine Beach State Primary School - Bicentennial Drive	8
278/LGSR/8	Capability and development - Noosa Shire Council	7
<b>Noosa</b>		<b>171</b>
<b>Total</b>		<b>1,814</b>

# Eastern Downs RRTG

## RRTG Members

Toowoomba Regional Council

TMR's Darling Downs District

## RRTG Chair

Councillor Carol Taylor, Infrastructure Services  
Portfolio Chair, Toowoomba Regional Council

## RRTG Technical Committee Chair

David Pascoe, Manager Construction and  
Maintenance Central, Toowoomba Regional Council

## Technical Coordinator

Bruce Stevenson, Toowoomba Regional Council



## Roads and Transport Alliance TIDS

Project Number	Description	As at 30 June 2014-15 (\$'000)
265/LGSH/3	Bunkers Hill State School - Bus set-down areas and road widening - Bunkers Hill School Road	45
265/LGSH/4	Geham State School - Bus set-down area and road widening - New England Highway	95
265/LGSR/78	Drayton - Wellcamp Road - Rehabilitate pavement - 3.20 - 4.20km	1,018
265/LGSR/79	Oakey 4AK Road (Hamlyn Road - Hastings Road) - Rehabilitate and widen	114
265/LGSR/80	Clifton - Pittsworth Road - Rehabilitate and widen - 9.60 - 15.60km	117
29/LGSL/4	Capability and development	8
<b>Toowoomba</b>		<b>1,398</b>
<b>Total</b>		<b>1,398</b>



Cr Carol Taylor, Chair, Eastern Downs RRTG; with Sal Petrocitto, CEO, and David Carlisle, Program Director, AccessCONNECT, National Heavy Vehicle Regulator at the 2014 Australian Local Government Association National Local Roads Congress.



# Western Downs RRTG

## RRTG Members

Western Downs Regional Council

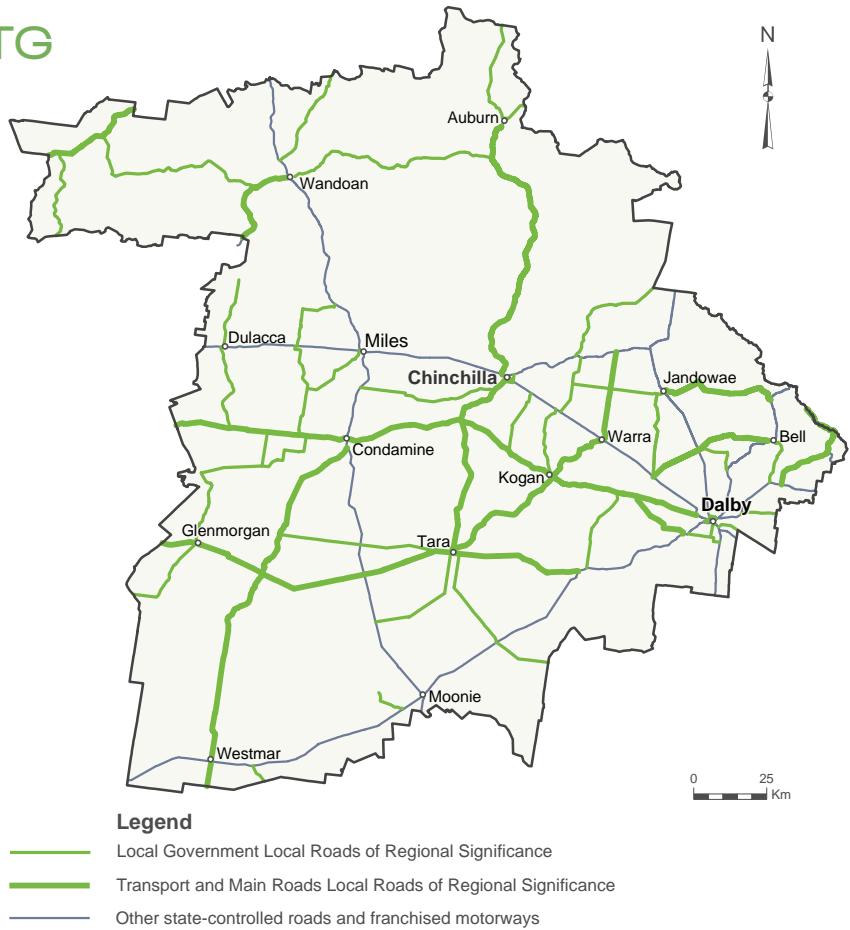
TMR's Darling Downs District

## RRTG Chair

Councillor Andrew Smith, Western Downs Regional Council

## RRTG Technical Committee Chair

Graham Cook, Group Manager of Works, Western Downs Regional Council



## Roads and Transport Alliance TIDS

4.4

Project Number	Description	As at 30 June 2014-15 (\$'000)
222/LGSH/4	Dalby State School - Visibility of school crossing - Cunningham Street	10
222/LGSH/5	Chinchilla Christian School - Provide pedestrian crossing - Oak Street	9
222/LGSR/15	Burra Burri Road - Seal shoulder - 0 - 13.60km	500
222/LGSR/16	Western Road - Widen and seal - 23.45 - 33.43km	244
222/LGSR/43	Hookwood Road - Construct to new sealed two lane - 3.70 - 7.50km	198
222/LGSR/51	Inverai Road - Rehabilitate and widen - 2.70 - 16.40km	145
222/LGSR/9	Riverglen Road - Construct to new sealed two lane - 10.90 - 17.00km	250
<b>Western Downs</b>		<b>1,355</b>
<b>Total</b>		<b>1,355</b>

# Southern RRTG

## RRTG Members

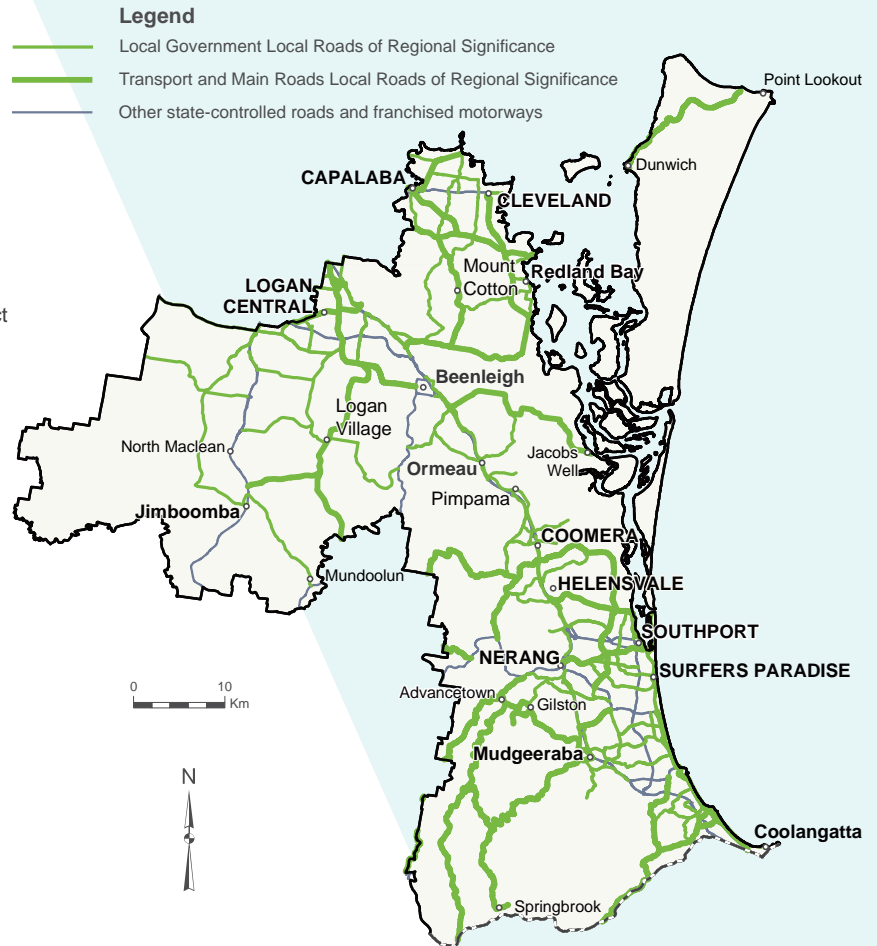
- Gold Coast City Council
- Logan City Council
- Redland City Council
- TMR's South Coast District and Metropolitan District

## RRTG Chair

Councillor Don Petersen, Logan City Council

## RRTG Technical Committee Chair

Murray Erbs, Group Manager City Infrastructure, Redland City Council



## Roads and Transport Alliance TIDS

Project Number	Description	As at 30 June 2014-15 (\$'000)	45
230/LGSR/3	Helensvale Road - Widen to four lanes - Discovery Drive - Oxenford Southport Road	372	
230/LGSR/7	Christine Avenue and Cassowary Drive Intersection upgrade	80	
<b>Gold Coast</b>		452	
240/LGSR/8	Browns Plains Road - Intersection improvements - Logan Metro Indoor Sports Centre	477	
<b>Logan</b>		477	
256/LGSR/10	Wellington Point State School - Construct footpath/s - Robert Street / Cherside Street intersection	28	
256/LGSR/11	Capalaba State College - Construct footpath/s - Gandarra Street - Balandra Street	43	
256/LGSR/14	Capability and development	12	
256/LGSR/4	Shore Street West - Rehabilitate and overlay - Masthead Drive - Passage Street	145	
256/LGSR/8	German Church Road - Rehabilitate and overlay - Redland Bay Road / Gordon Road intersection	175	
256/LGSR/9	Russell Island State School - Construct footpath/s - High Street	62	
<b>Redland</b>		464	
<b>Total</b>		<b>1,392</b>	

## State-wide Capability Development Fund

Project Number	Description	As at 30 June 2014-15 (\$'000)	35
240/LGSL/3	Specifications Alignment / Adaptation Project	20	
240/LGSL/4	Industry Workshop for Registered Engineers	15	
<b>Total</b>		<b>35</b>	

# Scenic Valleys RRTG

## RRTG Members

Ipswich City Council  
 Lockyer Valley Regional Council  
 Scenic Rim Regional Council  
 TMR's South Coast Region  
 TMR's Metropolitan Region

## RRTG Chair

Councillor Virginia West, Scenic Rim Regional Council

## RRTG Technical Committee Chair

Patrick Murphy, Director of Works & Infrastructure Services, Scenic Rim Regional Council

## Technical Coordinator

Graham Jordan, Lemmah Consulting



### Legend

- Local Government Local Roads of Regional Significance
- Transport and Main Roads Local Roads of Regional Significance
- Other state-controlled roads and franchised motorways

## Roads and Transport Alliance TIDS

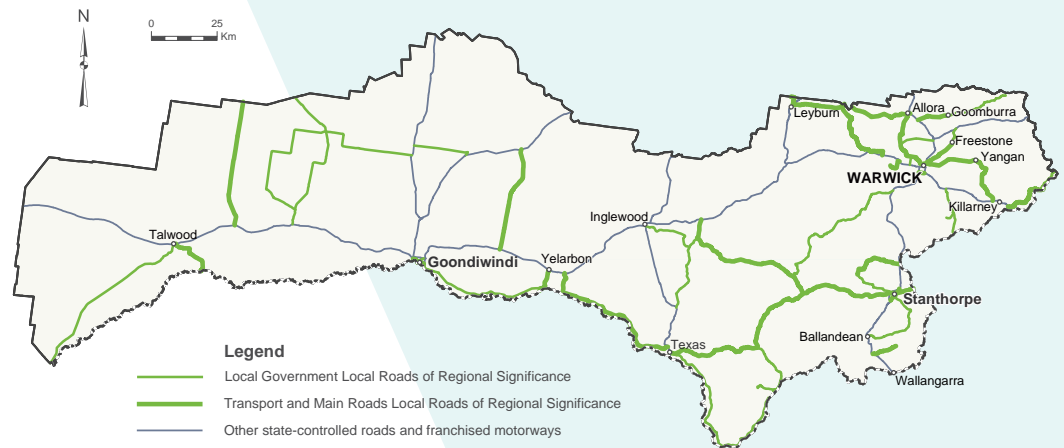
Project Number	Description	As at 30 June 2014-15 (\$'000)
207/LGSR/9	Christmas Creek Road - Foxley Bridge - Replace bridge/s and approaches	378
<b>Scenic Rim</b>		<b>378</b>
235/LGSR/16	Cobalt Street - Carole Park - Overlay asphalt	144
235/LGSR/17	Queen Street - Marie Street intersection - Overlay asphalt	220
<b>Ipswich</b>		<b>364</b>
239/LGSR/18	Hattonvale State School - Car parking - Hannant Road	24
239/LGSR/20	Mount Sylvia State School - Bus set-down facilities - Mount Sylvia Road	38
239/LGSR/21	Laidley State High School - Bus set-down facilities - Alfred Street	43
239/LGSR/22	Grantham State School - Construct cycleway - Victor Street	27
239/LGSR/23	Gehrke Road - Improve channelisation - Mountainview Drive intersection	149
239/LGSR/25	Tenthill Creek Road - Drainage improvements - Murphy's Access	40
239/LGSR/26	Withcott State School - Car park - Biggs Road	64
<b>Lockyer Valley</b>		<b>386</b>
<b>Total</b>		<b>1,128</b>



# Southern Border RRTG

## RRTG Members

- Goondiwindi Regional Council
- Southern Downs Regional Council
- TMR's Darling Downs District
- RRTG Chair – vacant
- RRTG Technical Committee Chair
- Dion Jones, Director Engineering, Goondiwindi Regional Council



## Roads and Transport Alliance TIDS

Project Number	Description	As at 30 June 2014-15 (\$'000)
231/LGSR/17	Herbert Street - Undertake safety improvements - McLean and Herbert Street	185
231/LGSR/18	Various LRRS Roads - Rehabilitate pavement	115
231/LGSR/21	Old Cunningham Highway - Apply asphalt resurfacing - Various locations	166
231/LGSR/22	Kioma Road - Widen pavement - 3.10 - 6.50km	100
<b>Goondiwindi</b>		<b>566</b>
262/LGSR/13	Eukey Road, Sugarloaf Road - Storm King Drive - Rehabilitate and widen - 0 - 5.00km	243
262/LGSR/16	Lyndhurst Lane - Construct bridge/approaches - Condamine River Crossing	50
262/LGSR/8	Inverramsay Road, Goomburra - Rehabilitate and widen - Various locations	266
<b>Southern Downs</b>		<b>559</b>
<b>Total</b>		<b>1,125</b>

## State-wide Capability Development Fund

Project Number	Description	As at 30 June 2014-15 (\$'000)
231/LGSL/2	Roughness Meters, including associated software and training	20
<b>Total</b>		<b>20</b>

# South West RRTG

## RRTG Members

Balonne Shire Council  
 Bulloo Shire Council  
 Murweh Shire Council  
 Paroo Shire Council  
 Quilpie Shire Council  
 Maranoa Regional Council  
 TMR's South West District

## RRTG Chair

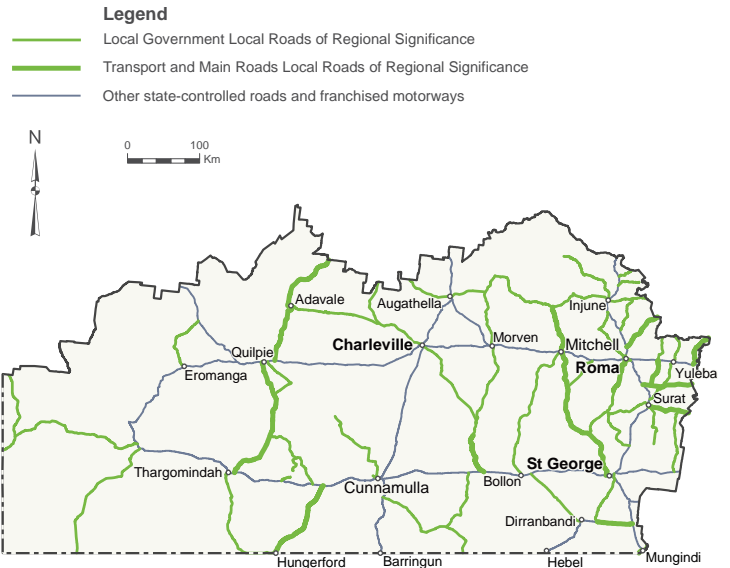
Councillor Ree Price, Maranoa Regional Council

## RRTG Technical Committee Chair

Kym Downey, Manager Infrastructure Planning and Design, Maranoa Regional Council

## Technical Coordinator

Gary Cook, Brandon & Associates



## Roads and Transport Alliance TIDS

Project Number	Description	As at 30 June 2014-15 (\$'000)
203/LGSR/3	Bollon - Dirranbandi Road - Construct to sealed standard - 2.50 - 5.10km	216
203/LGSR/6	Bollon - Dirranbandi Road - Upgrade floodway/s - 7.40 - 8.70km	124
<b>Balonne</b>		<b>340</b>
210/LGSR/6	Thargomindah - Hungerford Road - Construct to sealed standard including two floodways	492
210/LGSR/7	Blackgate Road - Upgrade floodways - Sections: 0 - 14.32km	200
<b>Bulloo</b>		<b>692</b>
247/LGSR/3	Adavale Road - Construct to sealed standard - 46.90 - 51.10km	325
<b>Murweh</b>		<b>325</b>
253/LGSR/5	Eulo - Toompine Road - Widen and seal - Sections: 16.20 - 25.59km	225
253/LGSR/6	Eulo - Toompine Road - Widen and seal - 27.58 - 44.95km	125
253/LGSR/7	Black Gate Road - Upgrade drainage and road geometry - 0 - 9.70km	200
253/LGSR/8	Yowah Opal Fields Road - Widen formation and seal - 22.00 - 22.05km	50
253/LGSR/9	Humburn Road - Reseal - 52.00 - 87.00km	109
<b>Paroo</b>		<b>709</b>
255/LGSR/1	Capability and development	53
255/LGSR/3	Kyabra Road - Construct to sealed standard - 38.40 - 46.80km	378
255/LGSR/4	Kyabra Road - Construct to sealed standard - 55.10 - 56.70km	100
<b>Quilpie</b>		<b>531</b>
259/LGSR/13	Maranoa Road, Various sections - Re-sheet unsealed road - 23.40 - 33.40km	100
259/LGSR/16	Bollon Road - Reseal - 84.00 - 95.00km	200
259/LGSR/26	Bollon Road - Reseal - 92.00 - 10.000km	200
259/LGSR/27	Bollon Road - Re-sheet unsealed road - 100.00 - 102.00km	50
259/LGSR/29	Wallumbilla North Road - Widen and seal - Sections: 21.00 - 25.90km	217
259/LGSR/30	Maranoa Road - Widen and seal shoulders - Sections: 15.98 - 23.44km	68
<b>Maranoa</b>		<b>835</b>
<b>Total</b>		<b>3,432</b>

## State-wide Capability Development Fund

Project Number	Description	As at 30 June 2014-15 (\$'000)
255/LGSL/6	Technical Coordinator Services	6
This project had funding over three years from 2012-13 to 2014-15. The final claim came in under budget and South West RRTG received \$58,585 in total over the three year period.		
<b>Total</b>		<b>6</b>

## 7 Glossary, Roads and Transport Alliance terminology

**Asset management:** measuring, monitoring, evaluating, modelling and managing road and other transport infrastructure asset performance.

**Asset management system:** the system generally includes an asset inventory, a form of condition recording system, a maintenance management system and a pavement management system.

**Assets:** the physical components of a road system or network. An asset is considered worthy of separate identification if it delivers services or benefits to the community of sufficient current or future value to warrant control and management on an individual basis. Typical road related assets include sections of road, sections of pavement, individual bridges, culverts, sets of traffic signals, signs, road furniture and road reserves.

**Capability Agreement and Action Plan:** developed by each Regional Roads and Transport Group (RRTG) to set out the RRTG's strategy to build and maintain the overall capability within their group.

**Local Roads of Regional Significance (LRRS):** a network of lower order state-controlled roads (generally district roads with some exceptions) and higher order local government roads (primary and secondary roads) performing similar functions. To promote the improved planning, management and Investment Strategies on these roads, they have been identified as a unique network of LRRS. RRTGs manage this road set under the Roads and Transport Alliance.

**Program Development:** a collective planning process that encompasses investment strategy development, project prioritisation, works program delivery and road safety risk management to assist with the effective management of the transport network.

**Regional Roads and Transport Groups (RRTGs):** the primary decision making bodies of the Alliance. RRTGs and their Technical Committees operate under the authority of the Roads and Transport Alliance Board. RRTGs are based on existing relationships taking into consideration economic, social, environmental and geographic characteristics of a region, which serves to influence the planning and management of the regional roads and transport network including services.

**Roads and Transport Alliance Board:** comprises senior executive representatives from TMR and the LGAQ. The role of the Roads and Transport Alliance Board is to oversee the implementation and ongoing operations of the Alliance; review the strategic management of the Alliance by ensuring effective governance arrangements and relationship building; and ensure consistency of outputs across the state.

**Roads and Transport Alliance Project Team (RTAPT):** facilitates the implementation of the Roads and Transport Alliance strategies and provides day to day operational support to RRTGs.

**State-wide Capability Development Fund (SCDF):** an ongoing allocation funded by TMR and allocated by the Roads and Transport Alliance Board, for capability improvement projects that align to Roads and Transport Alliance priorities and are likely to have state-wide application or deliver benefit to more than one RRTG.

**Technical Committee:** a committee comprising local government and TMR technical staff from a region that provides advice and recommendations to their respective RRTG; develops and monitors delivery of the RRTG works program.

**Technical Coordinator:** facilitates RRTG and Technical Committee actions, decisions and outcomes. The Coordinator is the conduit for communication between stakeholders, conducts administrative and non-administrative tasks and drives progress.

**Transport Infrastructure Development Scheme (TIDS):** State funding provided to Local Government for the development of transport-related infrastructure. Funding is generally provided on a matching basis (TMR/Local Government).







**BEWARE**



THE ROADS AND TRANSPORT  
**ALLIANCE**

